

CHARMILL

RESIDENTIAL

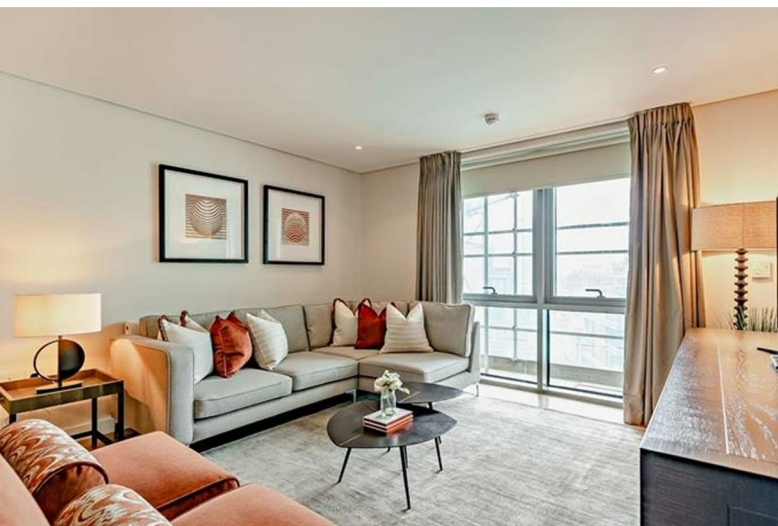


Merchant Square, Paddington W2

£1,695



Merchant Square East



Description

A stunning south facing interior designed apartment situated on the seventh floor of this prestigious building which features concierge service, lift service, and secure underground parking. This property comprises an open plan kitchen and reception room with beautiful wooden flooring, three double bedrooms and two bathrooms (one of which is en-suite).

Benefits also include easy access to superb transport links such as Paddington Train Station (Bakerloo, Hammersmith & City, Circle, District lines and Heathrow) Edgware Road (Circle, District and Bakerloo lines).

- Three bedrooms
- Open plan reception/kitchen
- Underground parking
- Video entry
- Two bathrooms
- Water views
- On site porter
- CCTV

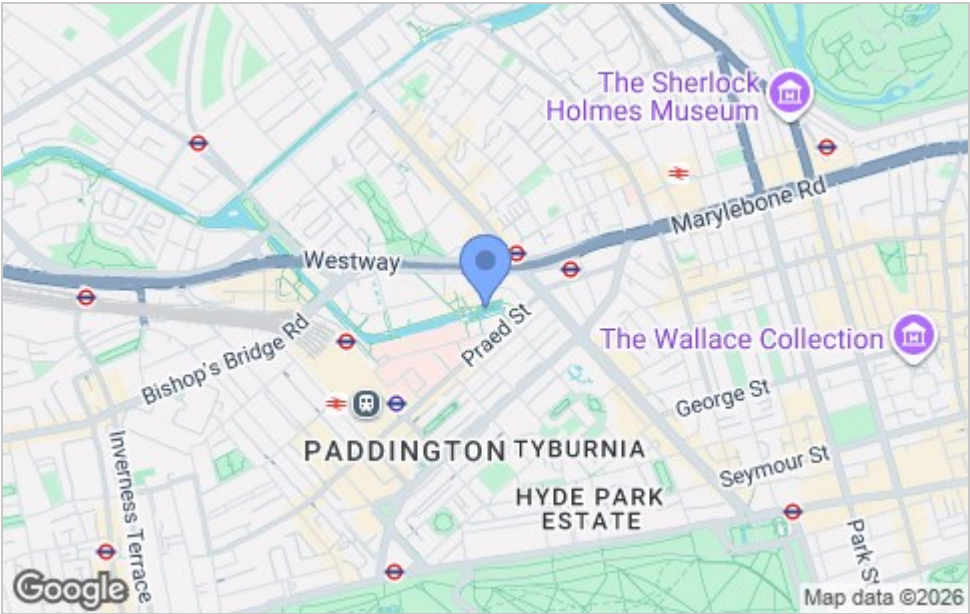




Floor Plan



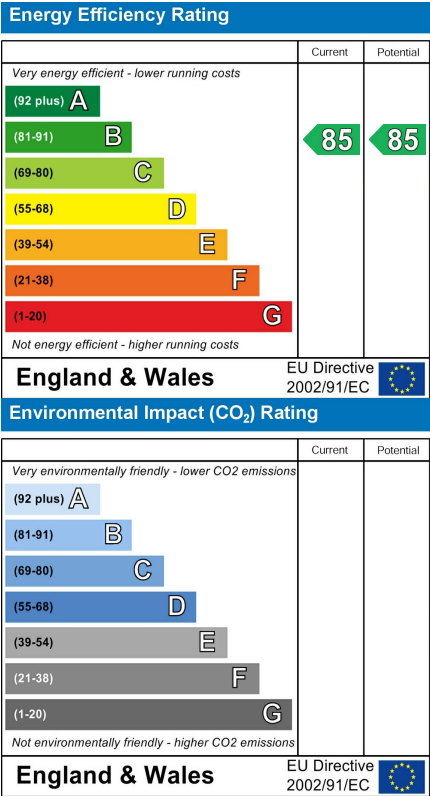
Area Map



Viewing

Please contact us on 020 7046 6275 if you wish to arrange a viewing appointment for this property or require further information.

Energy Efficiency Graph



These particulars, whilst believed to be accurate are set out as a general outline only for guidance and do not constitute any part of an offer or contract. Intending purchasers should not rely on them as statements of representation of fact, but must satisfy themselves by inspection or otherwise as to their accuracy. No person in this firms employment has the authority to make or give any representation or warranty in respect of the property.

020 7046 6275 • sales@charmillresidential.co.uk • 51 Maida Vale, Little Venice, London W9 1SD
charmillresidential.co.uk